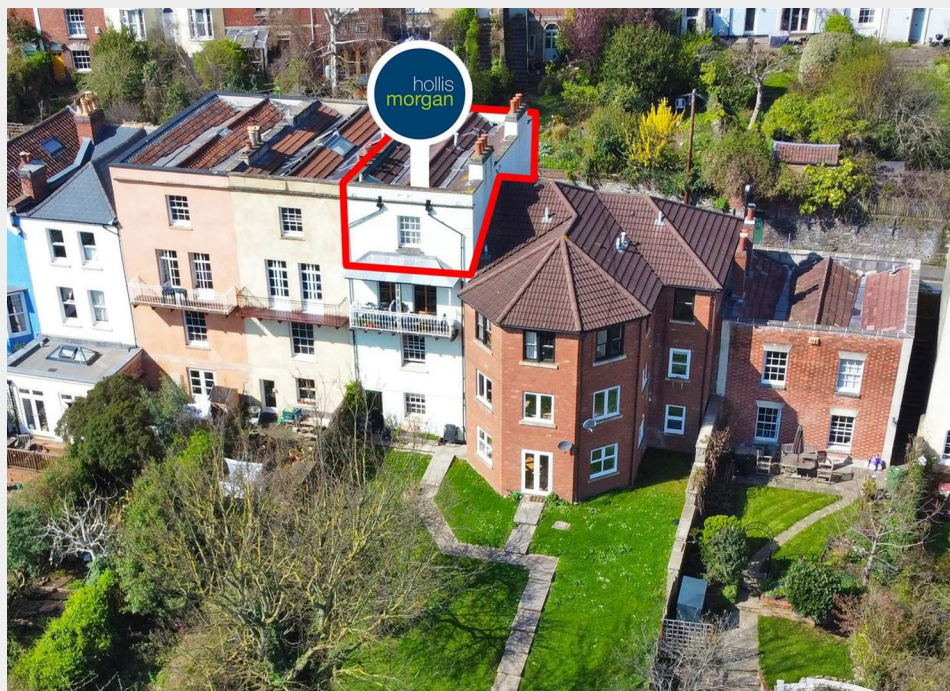


## Flat 6, 34 Upper Cheltenham Place, Montpelier, Bristol, BS6

Sold @ Auction £165,000



- FOR SALE BY ONLINE AUCTION
- WEDNESDAY 16th OCTOBER 2024
- VIDEO TOUR NOW ONLINE
- VIEWINGS - REFER TO DETAILS
- LEGAL PACK COMPLETE
- SOLD @ OCTOBER LIVE ONLINE AUCTION
- LEASEHOLD 1 BED FLAT
- VACANT | TOP FLOOR
- REQUIRES BASIC UPDATING
- EXTENDED 8 WEEK COMPLETION

Hollis Morgan – OCTOBER LIVE ONLINE AUCTION – A Leasehold VACANT 1 BED TOP FLOOR FLAT ( 464 Sq Ft ) in need of BASIC UPDATING.

# Flat 6, 34 Upper Cheltenham Place, Montpellier, Bristol, BS6 5HR

## Accommodation

### FOR SALE BY LIVE ONLINE AUCTION

\*\*\* SOLD @ OCTOBER LIVE ONLINE AUCTION \*\*\*

GUIDE PRICE £140,000 +++  
SOLD @ £165,000

ADDRESS | Flat 6, 34, Upper Cheltenham Place Montpellier, Bristol, BS6 5HR

Lot Number 12

The Live Online Auction is on Wednesday 16th October 2024 @ 17:30  
Registration Deadline is on Monday 14th October 2024 @ 16:00

The Auction will be streamed LIVE ONLINE via the Hollis Morgan website & you can choose to bid by telephone, proxy or via your computer.  
Registration is a simple online process – please visit the Hollis Morgan auction website and click “REGISTER TO BID”

### NO PRE AUCTION OFFERS

On this occasion the vendors will NOT be considering pre auction offers.

### THE PROPERTY

A Leasehold top floor flat with accommodation ( 464 Sq Ft ) comprising open plan Kitchen / Reception room, Bedroom and Bathroom.  
Sold with vacant possession.

Tenure - Leasehold | New 999 year lease

Managt Fees - £97.02 pcm

Council Tax - A

EPC - TBC

Utilities, Rights & Restrictions - Please refer to the Legal Pack

Flood Risk - Please refer to the Legal Pack

### THE OPPORTUNITY

FLAT FOR BASIC UPDATING

The property has been let for many years and would now benefit from some basic updating but would make a fine home or investment in this highly sought after location.

Please refer to independent rental appraisal.

### LOCATION

The property is situated on the desirable Upper Cheltenham Place, in the heart of Montpellier. The property is close to the local shops and cafes along the vibrant Picton Street whilst the amenities of the City Centre and Gloucester Road are easily accessible. There is excellent local transport links and both Fairlawn and The Dolphin Primary Schools are close by.

### SOLICITORS & COMPLETION

Lucy Bradbury

Capsticks

020 8780 4763

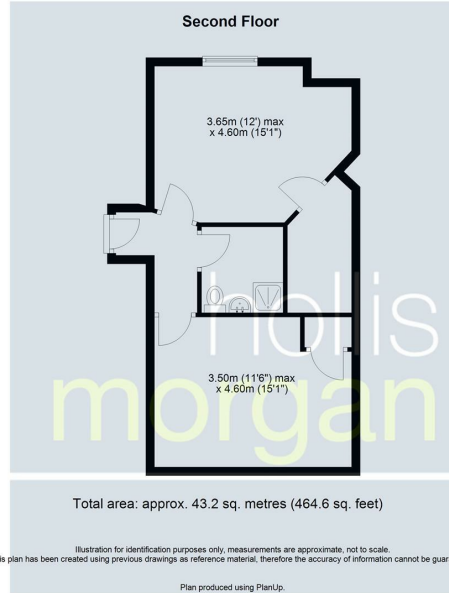
Lucy.Bradbury@capsticks.com

www.capsticks.com/

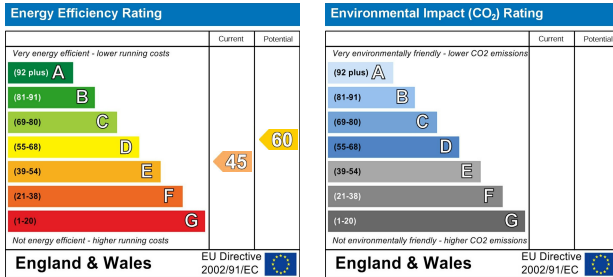
### EXTENDED COMPLETION

Completion is set for 8 weeks or earlier subject to mutual consent.

## Floor plan



## EPC Chart



9 Waterloo Street

Clifton

Bristol

BS8 4BT

Tel: 0117 973 6565

Email: post@hollismorgan.co.uk

www.hollismorgan.co.uk

Hollis Morgan Property Limited, registered in England, registered 7275716.

Registered address, 5 Upper Belgrave Road, Clifton, Bristol BS8 2XQ

## Auction Property Details Disclaimer

Hollis Morgan endeavour to make our sales details clear, accurate and reliable in line with the Consumer Protection from Unfair Trading Regulations 2008 but they should not be relied on as statements or representations of fact.

Please refer to our website for further details.